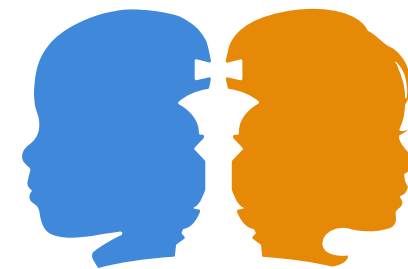




FIRSTMOVECHESS.ORG



FIRST MOVE

AMERICA'S FOUNDATION
FOR CHESS

FIRSTMOVECHESS.ORG



Our Mission

To integrate chess as a learning tool in 2nd and 3rd grade classrooms, in order to have an enduring positive impact on our students' critical thinking and social skills, and ability to achieve academically.



Our Vision

First Move is committed to the education of children. We want to see kids engaged in learning, having a positive educational experience, developing interest in STEM topics, and gaining valuable skills used in the classroom and in life.



Our Method

First Move engages young minds and teaches critical and creative thinking skills through the game of chess. While chess can be used at any age, First Move is not a “one size fits all” program. First Move is targeted to the academic standards of 2nd and 3rd grade students. Taught one hour per week via video, classroom teachers facilitate the exercises; no chess experience is necessary.



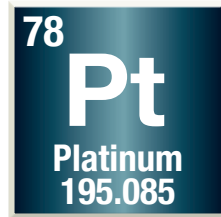
Science Technology Engineering Math

America's Foundation for Chess STEM Council is a group of businesses and individuals who are committed to the betterment of STEM education in this country, and who understand the link between chess and STEM skills. Through three different levels of financial support, STEM Council members contribute directly to First Move in working with second and third graders to develop the skills needed in science, technology, engineering and math. First Move puts kids' critical thinking development, the foundation of all STEM skills, as a priority.



First Move S.T.E.M. Council

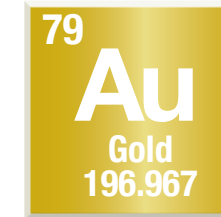
By joining our STEM Council, you have the opportunity to impact hundreds of kids across the country! Your support helps schools offset the first year costs. The cost structure is \$650 per classroom for the first year, second year costs are \$200 per classroom, and program costs ongoing are \$100 per classroom. Once the program is established we work with the schools to fund First Move themselves.



Platinum \$25,000

A Platinum donation will kick-start a school district, which gets First Move in more than 50 classrooms helping us to reach 1,280 students annually.

- We will promote your corporation at our events.
- Your name and corporate logo featured on our website.
- An Invitation to an exclusive STEM Council event social, including dinner and networking opportunities.



Gold \$15,000

A donation will grow a school district, which puts First Move in over 30 classrooms, reaching 770 students annually.

- Your name and corporate logo featured on our website.
- An Invitation to an exclusive STEM Council event social, including dinner and networking opportunities.



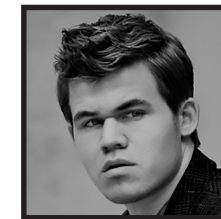
Silver \$7,500

A donation will help a school grow First Move into 15 classrooms, reaching 385 students annually.

- Your name will be located on our website.
- Invitation to an exclusive STEM Council event social, including dinner and networking opportunities.

Want to help us reach one million kids? Please consider joining our STEM Council! For more information, please contact America's Foundation for Chess, Director of Development, Anne Tyler.

WORLD CHESS CHAMPION MAGNUS CARLSEN



*"I consider First Move to be
the most strategic way
for kids to live up to
their full potential."*



FIRSTMOVECHESS.ORG